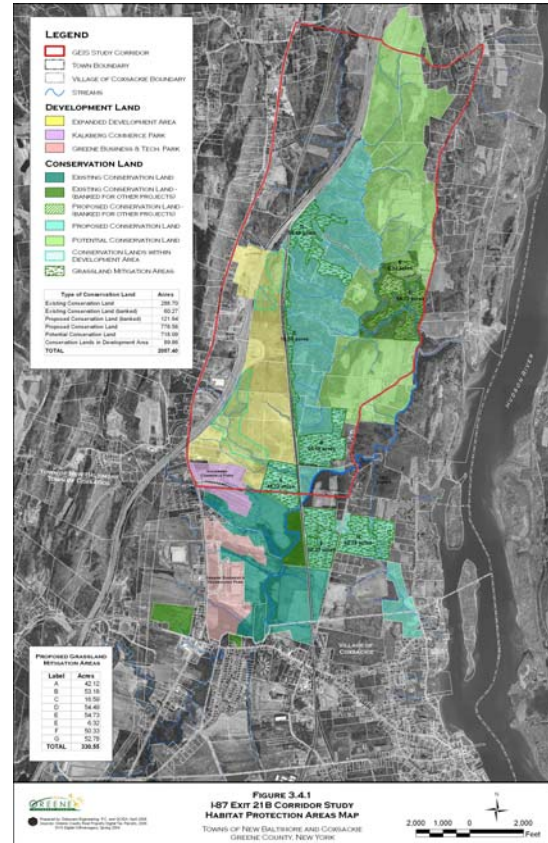


# GREENE COUNTY INDUSTRIAL DEVELOPMENT AGENCY I-87 EXIT 21-B MULTI-USE/DESTINATION RETAIL PARK GEIS



Delaware Engineering led the team of consultants that prepared the Generic Environmental Impact Statement (GEIS) for the proposed Exit 21B Destination Retail Project in the Town of New Baltimore, Greene County. The GEIS examines the impacts of five alternatives for the 328 acre site which is bounded by the NYS Thruway, the Kalkberg Business Park and the CSX Railroad. The preferred alternative includes a Destination Retail Center, a Destination Entertainment/Recreation Hotel with an indoor waterpark, and a high-end Main Street Retail complex.

Delaware coordinated the work of the specialized consultant team which included the site master planner, traffic engineers, environmental scientists, hydrogeologists, archaeologists and economic and energy analysts. Delaware was responsible for ensuring that the complex SEQR process was followed, and was the primary author of all SEQR documents including the Draft, Supplemental and Final Generic Environmental Impact Statements. Delaware also led the public informational meetings and hearings, and meetings with local officials and regulatory agencies.