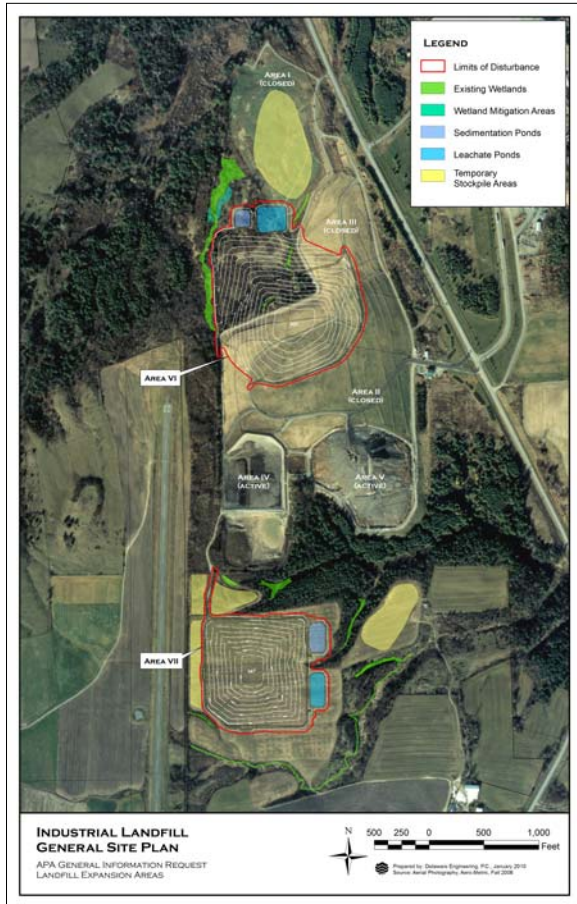


CONFIDENTIAL CLIENT - ADIRONDACK PARK, NEW YORK

INDUSTRIAL LANDFILL DESIGN, CONSTRUCTION, AND CLOSURE



Delaware staff has been responsible for the ongoing design, permitting, construction, closure and environmental analysis for an industrial waste landfill in the Adirondack Park for over 16 years. The landfill was originally opened in the early 1970s and currently covers approximately 100 acres. The facility consists of 3 closed landfill areas, 2 active areas and associated infrastructure including an access road network, electrical distribution, leachate removal and storm-water management systems.

Delaware has prepared engineering design and closure plans and specifications for the landfill in accordance with NYSDEC Part 360 regulations, provided construction management services and prepared environmental monitoring reports. Delaware is currently securing permitting and approvals from the Adirondack Park Agency, NYSDEC, OPRHP, Army Corps of Engineers, Federal Aviation Administration and local officials for 2 new expansion areas totaling 48 acres to be constructed adjacent to the existing landfill.

