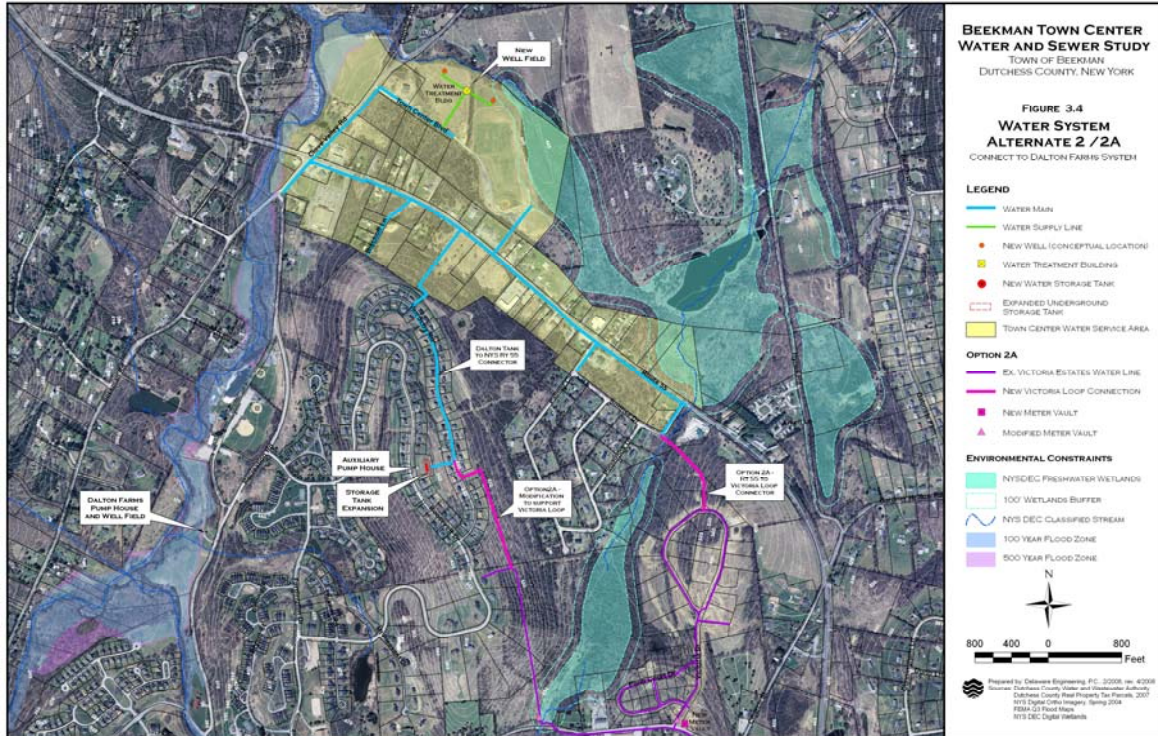


TOWN OF BEEKMAN

CENTRAL WATER AND WASTEWATER FEASIBILITY STUDY



The Town of Beekman plans to create a new Town Center along NY State Route 55 and County Route 9, incorporating approximately 135 acres of land. The objective of the Town Center is to focus a traditional pattern of mixed-use, pedestrian friendly development in a compact area while maintaining the rural character of the surrounding countryside. Development of the Town Center is intended to provide economic benefits in terms of tax base, a jobs/housing balance and foster a sense of community. In planning the Town Center, community leaders recognized that provision of central water and sewer services are essential to support their vision of compact development.

The Town and Dutchess County Water and Wastewater Authority (DCWWA) engaged Delaware Engineering to evaluate various alternatives for providing central water and sewer services to the Town Center. Delaware recently completed a feasibility study which includes calculation of water and sewer service demand under current conditions and at full built-out; analysis of methods to convey potable water and collect sewage within the Town Center; investigation of the potential to provide a new water supply and new wastewater treatment; and review of opportunities to connect the Town Center systems to the existing DCWWA Dalton Farms water and sewer systems.