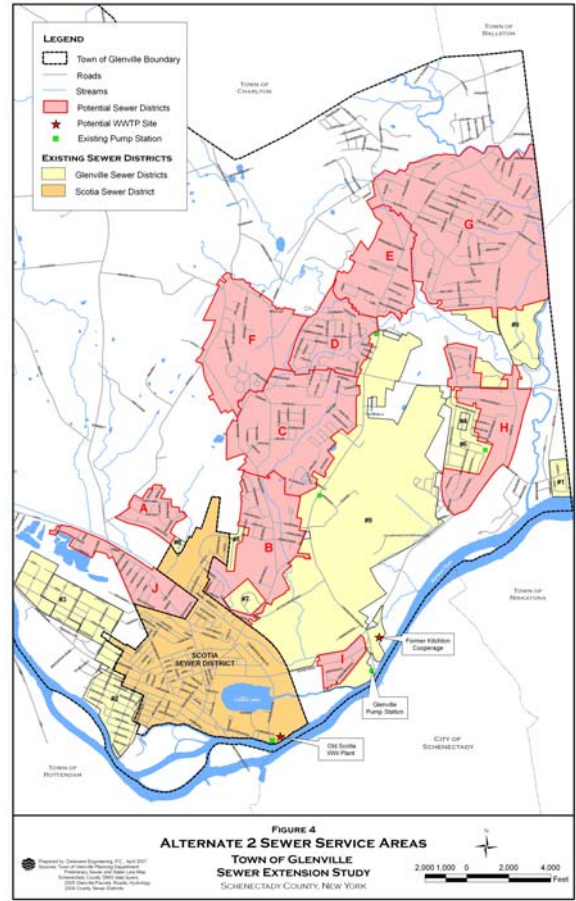
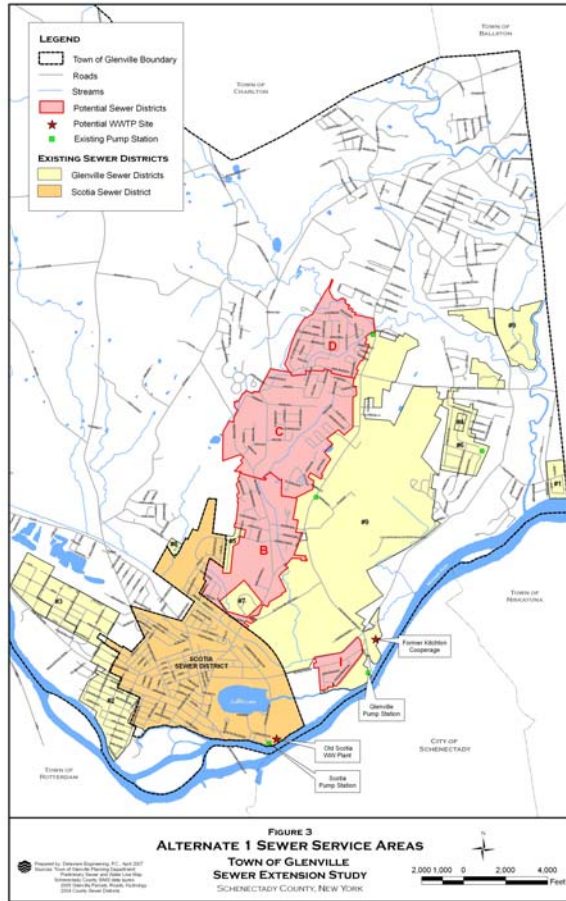


TOWN OF GLENVILLE/VILLAGE OF SCOTIA

WASTEWATER SYSTEM EXPANSION FEASIBILITY STUDY



The Town of Glenville and Village of Scotia currently pump all wastewater to the City of Schenectady wastewater treatment plant for contract disposal. The Town and Village jointly hired Delaware Engineering to examine their wastewater disposal systems and evaluate alternatives to their existing arrangements. Delaware prepared a feasibility study which examined the potential for consolidation of municipal services, construction of a new independent wastewater disposal facility, and future expansion of existing service areas.

Delaware conducted siting studies to identify appropriate locations for a new treatment plant, and prepared a conceptual plant design. The feasibility study also evaluated the unsewered areas of the Town and included preliminary cost estimates for extension of municipal sewers to these areas. A number of different scenarios were considered and a sewer rate analysis was conducted for each scenario. The study included estimated costs of building a new treatment plant and system extensions, and potential funding mechanisms.