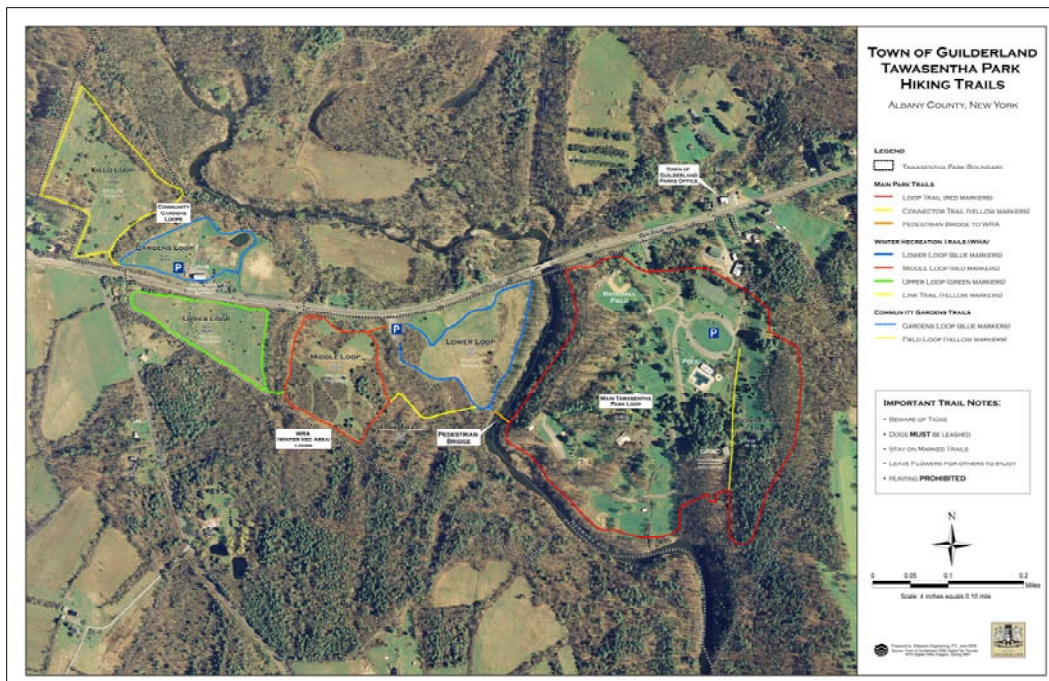


TOWN OF GUILDERLAND

TAWASENTHA PEDESTRIAN BRIDGE AND PARK IMPROVEMENTS



Delaware Engineering provided design and construction administration services for a pedestrian bridge and park improvements for the Town of Guilderland. The project included geotechnical services, structural design, surveying, archeological review, site planning, permitting and environmental services. The bridge crosses the Normans Kill,

linking the west and east sides of the extensive Tawasentha Park trail system. The banks of the creek were stabilized with riprap. A trail system map was designed for public orientation at the park entry kiosk.

*Project Cost: \$260,000
Year of Completion: 2007*