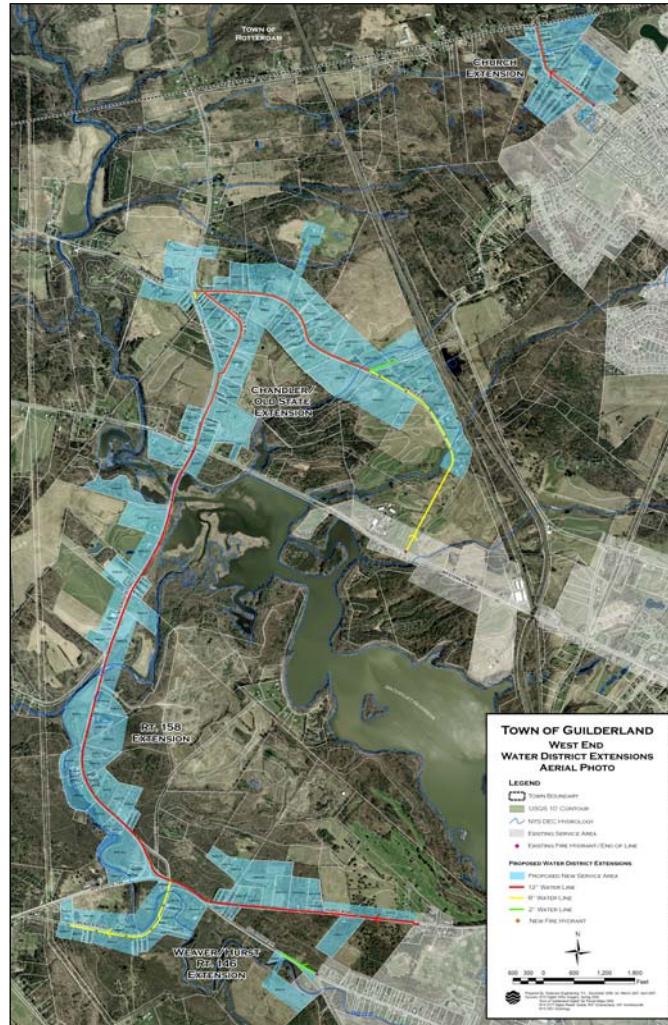

TOWN OF GUILDERLAND

WEST END WATER DISTRICT EXTENSION



Delaware Engineering recently completed planning, permitting and constructing the West End Water District Extension in the Town of Guilderland. Delaware initially performed a feasibility study examining alternative routes and typical costs to new users, and then prepared a map, plan and report for the project. The planning and permitting phase includes creation of a Water District Extension, procurement of easements and regulatory approvals from NYS DEC, DOH,

DOT and OPRHP, Army Corps of Engineers and Albany County Health Department. Approximately 6.5 miles of water lines were constructed including water crossings, hydrants, valves and service connections for 190 properties in the western end of the Town. Construction began in June 2008 and was completed in the fall of 2009.

Cost: \$5.4 million
Design Flow: 47,500 GPD